



License No. 800025015
FL License # CMTL-0003
CLIA No. 10D1094068

Certificate of Analysis

Compliance Test

APEX LABS CBD
1610 R St.
SACRAMENTO, CA 95811

Batch # 07062023
Batch Date: 2023-07-06
Extracted From: HEMP

Test Reg State: Florida

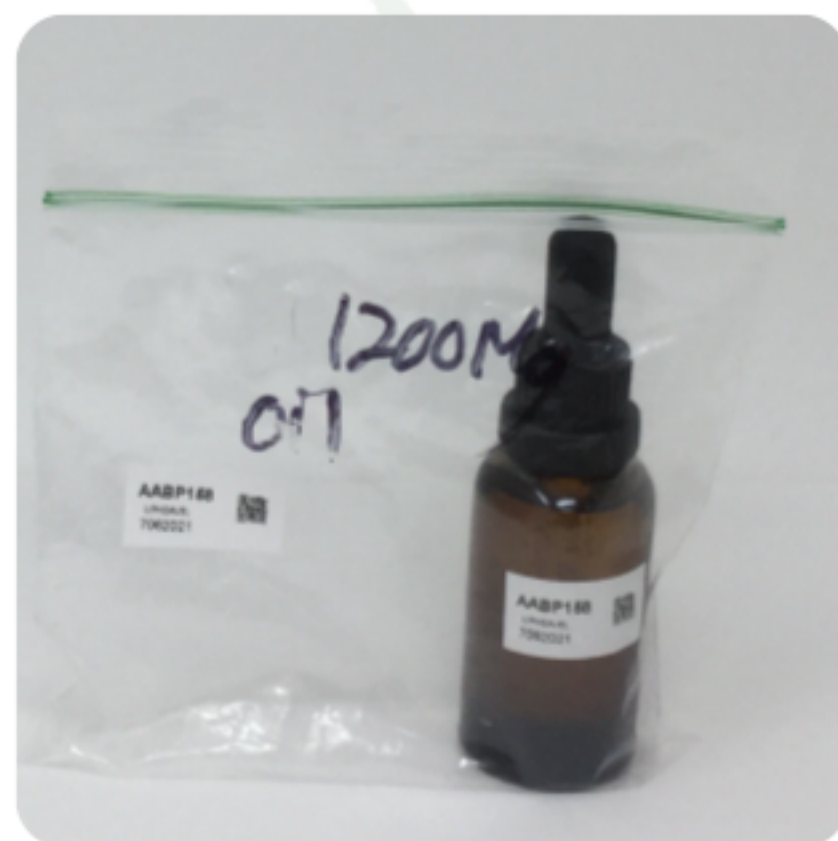
Production Facility: UPHEAVEL
Production Date: 2023-07-06

Order # UPH230706-170038
Order Date: 2023-07-06
Sample # AABP158

Sampling Date: 2023-07-12
Lab Batch Date: 2023-07-12
Completion Date: 2023-07-22

Initial Gross Weight: 79.828 g

Number of Units: 1
Net Weight per Unit: 28297.000 mg



Product Image

Potency Tested

Potency - 11
Specimen Weight: 1514.700 mg

Tested
(HPLC/LCMS)

Potency Summary

Analyte	Dilution (1:n)	LOD (%)	LOQ (%)	Result (mg/g)	(%)
CBD	1000.000	0.000026	0.001	55.550	5.555
CBDV	1000.000	0.000014	0.001	0.140	0.014
CBC	1000.000	0.000003	0.001	<LOQ	<LOQ
THCV	1000.000	0.000013	0.001	<LOQ	<LOQ
Delta-9 THC	1000.000	0.000018	0.001	<LOQ	<LOQ
Delta-8 THC	1000.000	0.000054	0.001	<LOQ	<LOQ
CBN	1000.000	0.000007	0.001	<LOQ	<LOQ
CBGA	1000.000	0.000032	0.001	<LOQ	<LOQ
CBG	1000.000	0.00008	0.001	<LOQ	<LOQ
CBDA	1000.000	0.000248	0.001	<LOQ	<LOQ
THCA-A	1000.000	0.000065	0.001	<LOQ	<LOQ

Total CBD 5.555% 1,571.898mg	Total Delta 10 None Detected
Total THC None Detected	Total Delta 8 None Detected
Total CBG None Detected	Total CBN 0.014% 3.962mg
Other Cannabinoids None Detected	Total Cannabinoids 5.569% 1,575.860mg

Xueli Gao
Ph.D., DABT
Lab Toxicologist

Aixia Sun
D.H.Sc., M.Sc., B.Sc., MT (AAB)
Lab Director/Principal Scientist



Definitions and Abbreviations used in this report: *Total CBD = CBD + (CBD-A * 0.877), *Total THC = THCA-A * 0.877 + Delta 9 THC, *CBG Total = (CBGA * 0.877) + CBG, *CBN Total = (CBNA * 0.877) + CBN, *Other Cannabinoids Total = CBC + CBDV + THCV + THCA-A, *Total Detected Cannabinoids = CBD Total + CBG Total + CBN Total + THC Total + CBC + CBDV + THCV + THCA-A, *Analyte Details above show the Dry Weight Concentrations unless specified as 12% moisture concentration. (mg/ml) = Milligrams per Milliliter, LOQ = Limit of Quantitation, LOD = Limit of Detection, Dilution = Dilution Factor (ppb) = Parts per Billion, (%) = Percent, (cfu/g) = Colony Forming Unit per Gram (cfu/g) = Colony Forming Unit per Gram, LOD = Limit of Detection, (µg/g) = Microgram per Gram (ppm) = Parts per Million, (ppm) = (µg/g), (aw) = aw (area ratio) = Area Ratio, (mg/Kg) = Milligram per Kilogram, *Measurement of Uncertainty = +/- 5%



This report shall not be reproduced, without written approval, from ACS Laboratory. The results of this report relate only to the material or product analyzed. Test results are confidential unless explicitly waived otherwise. Accredited by a third-party accrediting body as a competent testing laboratory pursuant to ISO/IEC 17025 of the International Organization for Standardization.